

Mark Goldman & Associates

JUSTICE FACILITY PLANNERS

Hall County, Georgia

Owner's Representative / Continuous Design Review /
Program Management

Project Description:

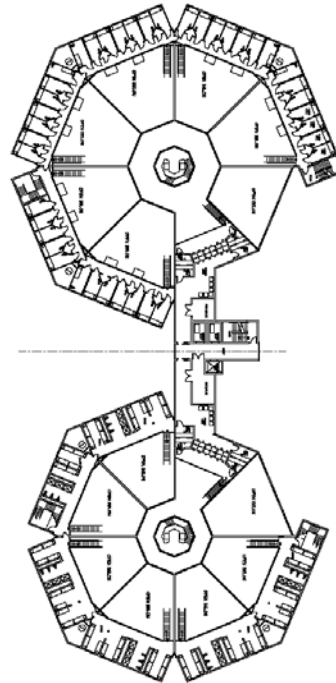
To oversee and manage the design of its new 1,100-bed Jail facility, Hall County, Georgia sought a team that included experts in jail design and operations, staffing, cost control, sheriff's offices' and jail engineering and architecture, and construction. Mark Goldman & Associates (MGA) was a key part of the selected team.

Services Delivered:

- Reviewing and revising the Operational and Architectural Program so it would more fully support the Owner's mission and objectives, philosophy, and needs; and to meet state and federal standards.
- Developing, analyzing, and comparing six options for substantially reducing square footage, construction costs, and operational costs, while still meeting all operational and functional requirements.
- Studying and formulating recommendations on single cells vs. double cells vs. four-person cells vs. dormitories, drawing from research on impacts on behavior.
- Comparing the architectural program with the design to make sure that all needed spaces were provided.
- Reviewing and critiquing conceptual design options, and numerous iterations of the schematic design, design development and construction documents – to help ensure that all parts of the building will be safe, secure, supportive of staff and their functions, provide flexibility for the future, and are cost efficient to operate and maintain.
- Developing the staffing plan for all Jail positions.
- Identifying furniture, fixtures & equipment (FF&E).



Beginning of construction. The seven-story project is now nearing completion.



One of many design options analyzed by MGA to help contain costs and improve efficiency and operations.